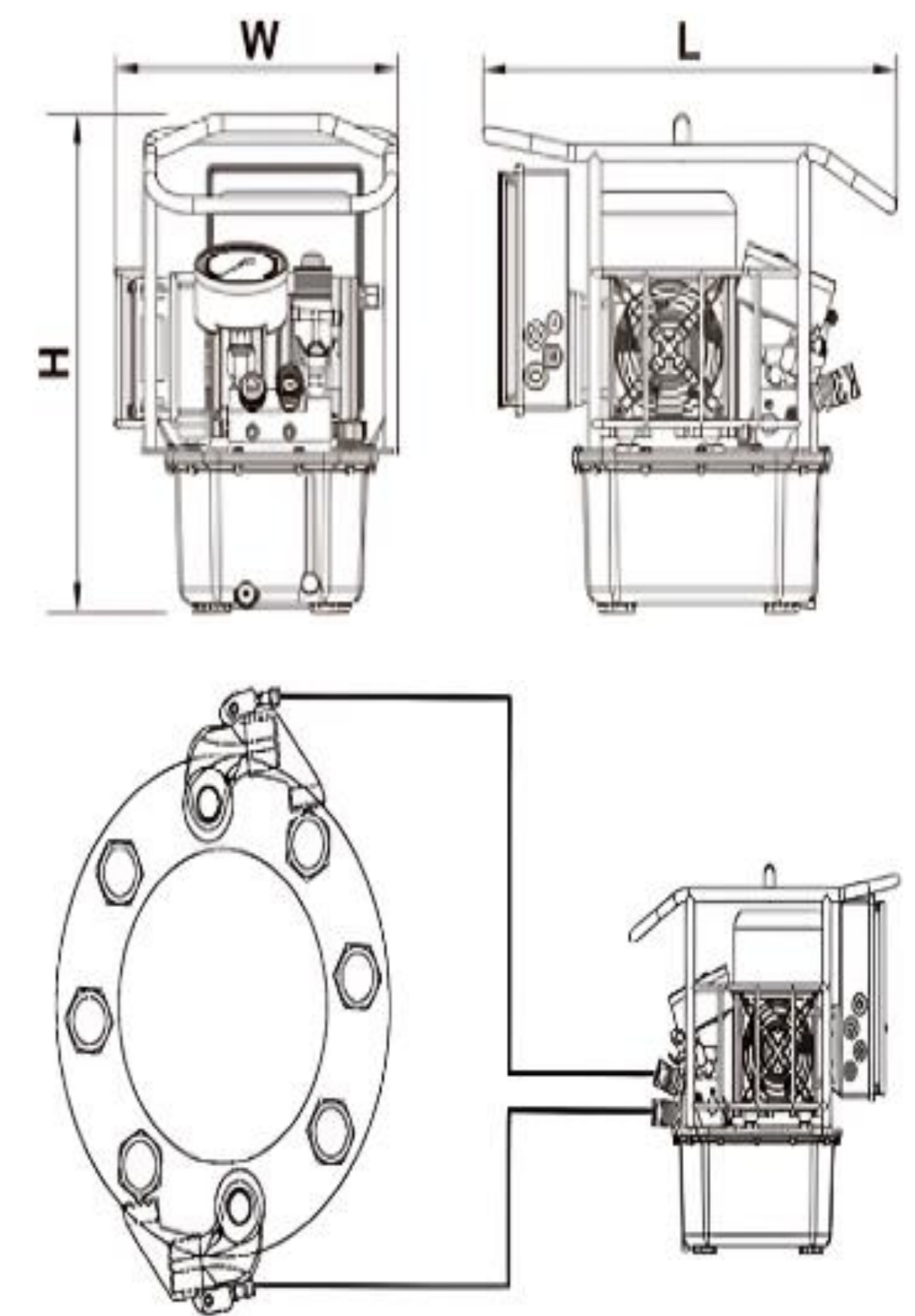


Electric Pump LP3 Series

- Compact automatic three stage flow, most efficiency.
- Applicable on both one or two Wrenches. simultaneously.
- Aluminum oil tank with oil gauge and thermometer.
- Have $\Phi 100$ high pressure gauge.
- Working pressure: 40-700 bar.
- With efficient radiator, the pump can work 24 hours continuously.
- The motor can be changed according to the different voltage.
- You can use manifold to operate 4 Wrenches simultaneously.

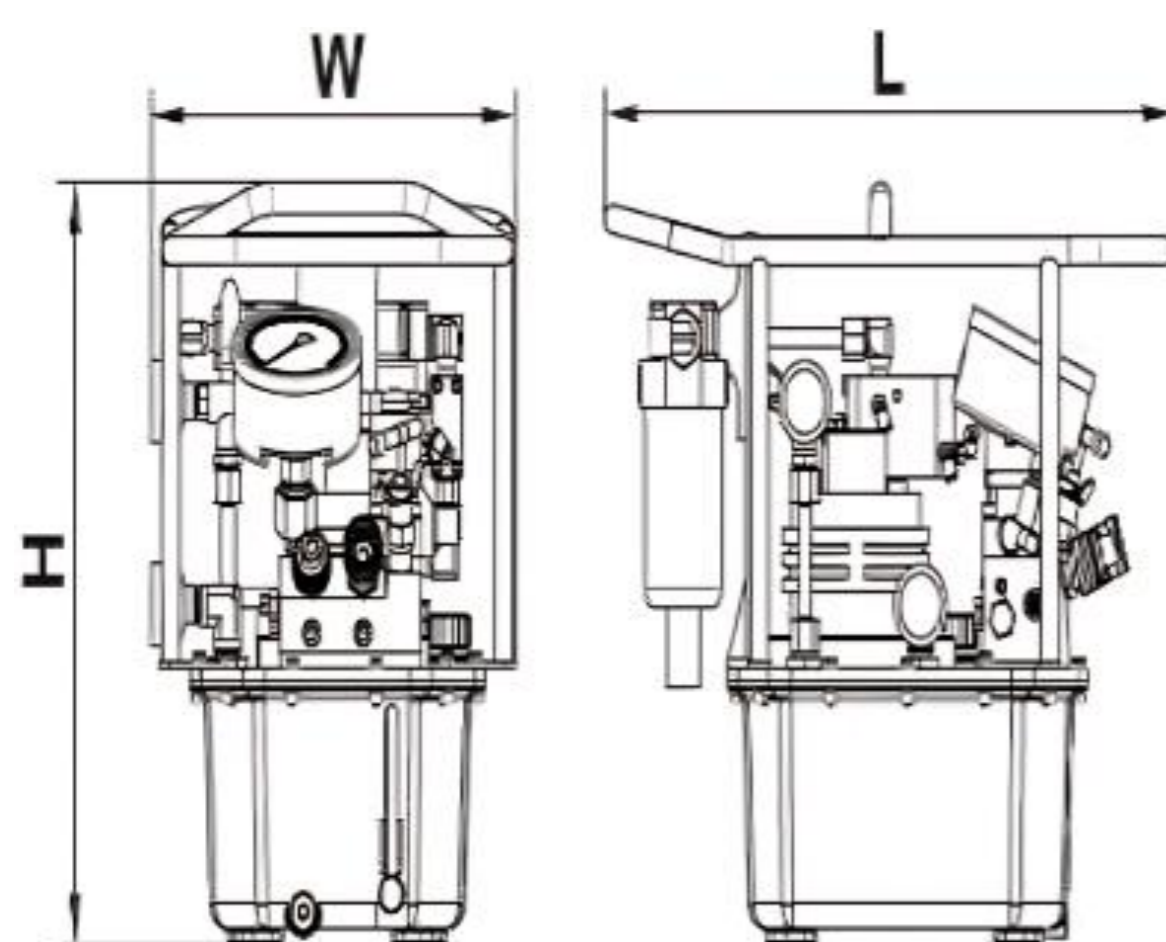


Model	LP3-2	LP3-4
Working Pressure	70 Mpa	70 Mpa
Drive	Electric	Electric
Voltage	220 V / 50 Hz	220 V / 50 Hz
Power	1.1 KW	1.1 KW
Tank Capacity	5.5 L	5.5 L
Flow Rate	7-1.6-0.8 L/min	7-1.6-0.8 L/min
Oil Cooler	Yes	Yes
Weight	25 Kg	27 Kg
Oil Outputs	4x1/4" NPT	8x1/4" NPT
Dimension	445x304x426	461x304x426



Pneumatic Pump LP3-N Series

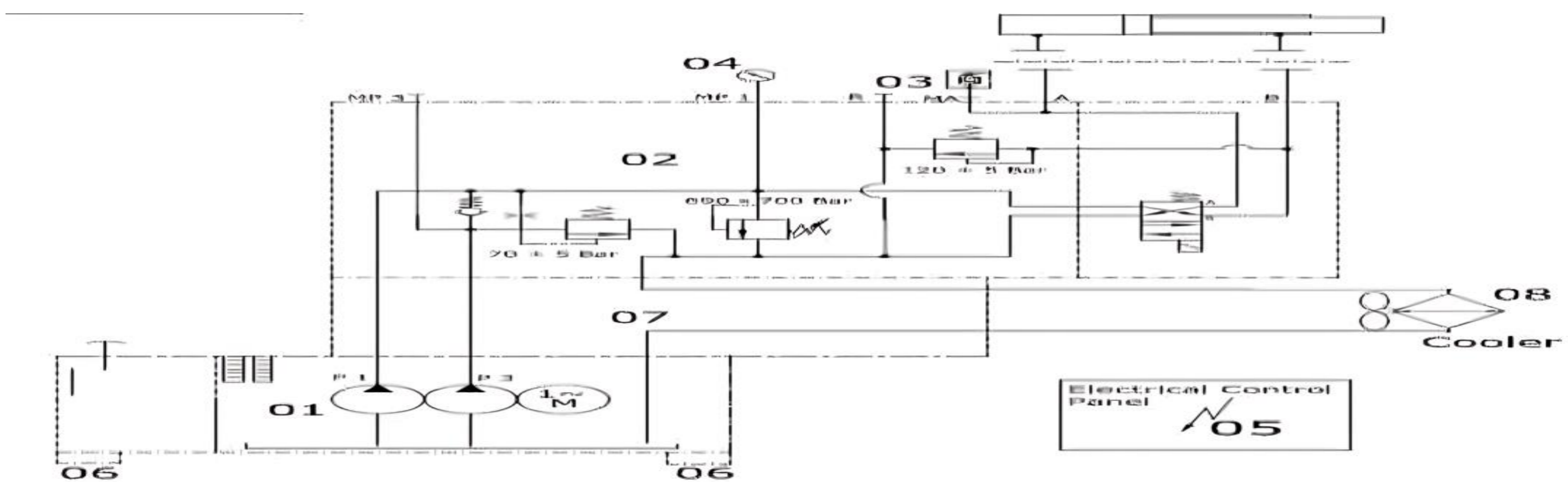
- Compact automatic three stage flow, most efficiency.
- The Single valve block can be replace by component FP4, there by allowing 2 or 4 Tools to be driven simultaneously.
- Three stage with air drive.
- Supporting continuous operation with steel frame.
- 4" diameter gauge, aluminium oil tank with oil level indicator
- Variable pressure adjustment between 70-700 bar
- Designed for continuous operation



Model	LP3-N2	LP3-N4
Operating Wrench	2	4
Working pressure	70 bar	70 bar
Air Pressure (Input)	4-8 Bar	4-8 Bar
Power	3.0 KW	3.0 KW
Tank Capacity	5.5 L	5.5 L
Flow Rate (low-mid-high)	8.6-2.2-1.1 L/min	8.6-2.2-1.1 L/min
Oil cooler	N/A	N/A
Weight	22Kg	24Kg
Oil outputs	4x1/4" NPT	8x1/4" NPT
Dimension	442x282x377mm	460x282x377mm

Electric Pump BHP5000 Series

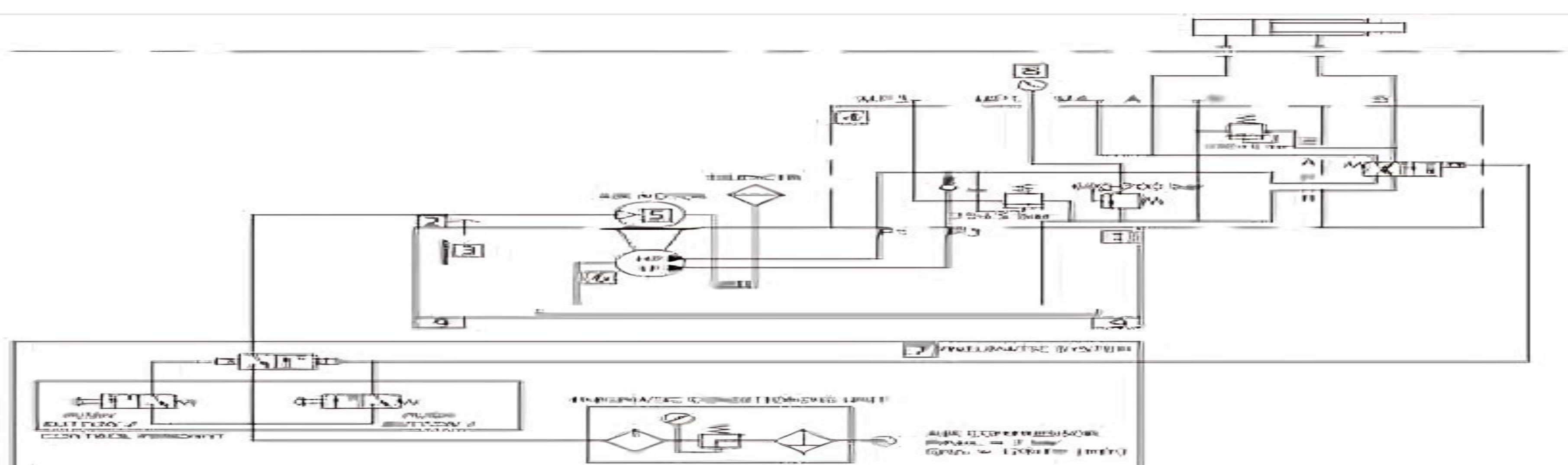
- Pump Flow - 0.98 lpm+8.6 lpm (Radial Piston Pump/Gear Pump)
- Motor - 1.1 KW, 1PH, 230V, 50HZ (2770 rpm)
- Weight of the Power Pack :- 35Kgs w/o oil (Approx.)
- Tank Capacity - 6 Litre
- Usable volume - 3 Litre
- Max System Pressure - 700 Bar
- Return line pressure - 90 Bar
- Unloading pressure - 70 Bar
- Control voltage for solenoid - 24V DC
- Control pendant will be of 230V AC
- Port sizes - A and B : ¼" BSPP
- Hydraulic oil recommended to be used ISO VG 68



Pneumatic Pump BHP5000N Series



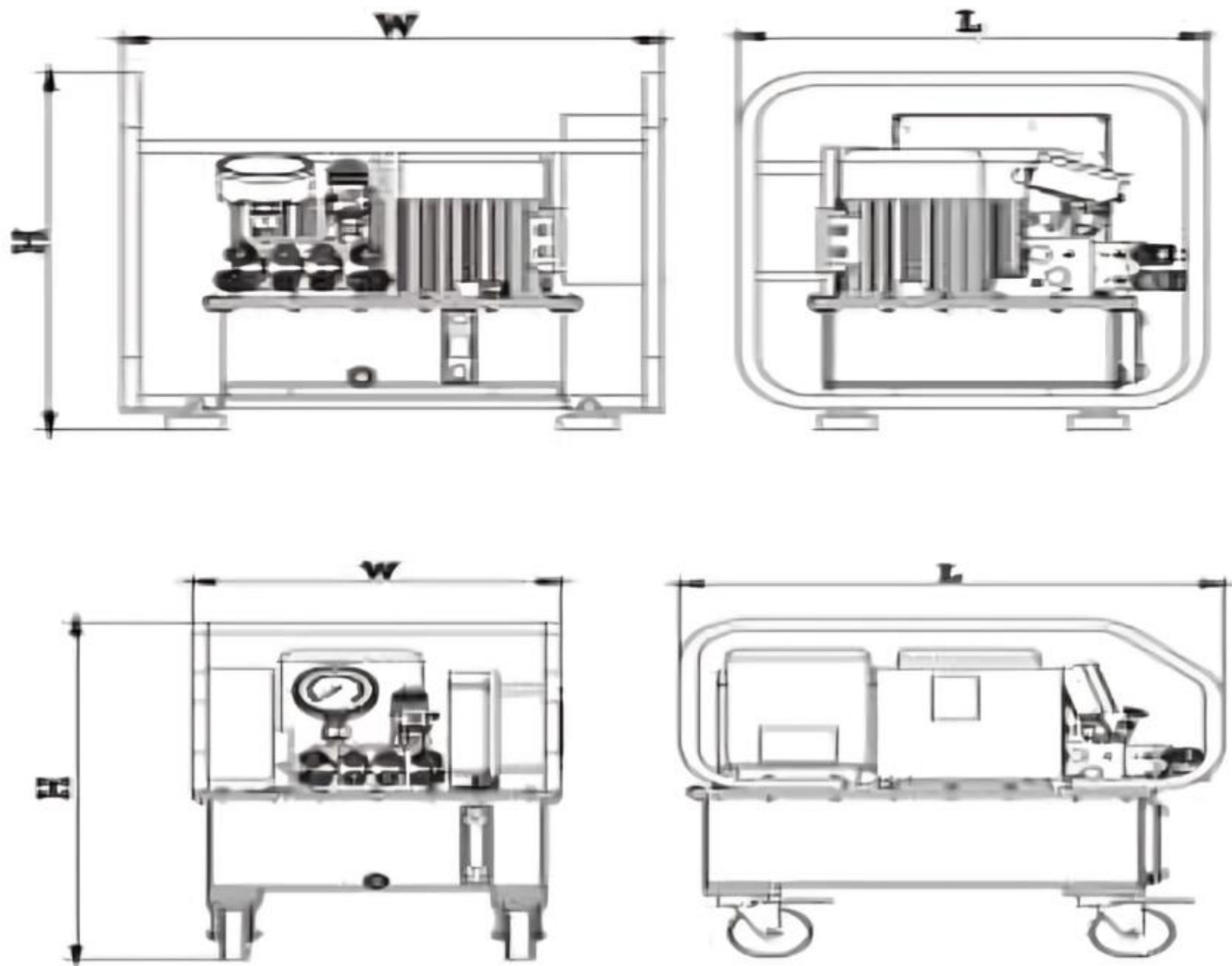
- Pump Flow : 0.98 (P1) lpm + 8 (P3) lpm (Duel Radial Piston Pump)
- Pneumatic Motor : 3 KW, 3000 rpm
- Weight of the Power Pack : 30 Kg w/o oil (approx.)
- Tank Capacity : 5 liter
- Usable Volume : 4 liter
- Max System Pressure (Hydraulic) : 700 bar
- Return Line Pressure : 100 bar
- Unloading Pressure : 70 bar
- Port Sizes : A and B To Suit G ¼" BSPP
- Power Pack is Pneumatically Operated with Controls
- Air Unit Specification :-
 - 1) Air Free Flow (cfm) :- 128-150 cfm,
 - 2) Motor Power (kW) :- 3,
 - 3) RPM :- ~3000



Double Engine High Speed Electric Pump

DHP Series

- Compact automatic three stage flow, can start in high pressure.
- Applicable on both one or two Wrenches. simultaneously.
- Aluminum oil tank with oil gauge and motor.
- Have $\Phi 100$ high pressure gauge.
- Working pressure: 40-700 bar.
- With efficient radiator, the pump can work 24 hours continuously.
- You can use manifold to operate 4 Wrenches simultaneously.



Model	DHP 1.1 KWx2 (220V)		DHP 2.2 KWx2 (380V)	
	DHP-220x4	DHP-220x8	DHP-380x4	DHP-380x8
Working pressure	70 Mpa	70 Mpa	70 Mpa	70 Mpa
Drive	Electric	Electric	Electric	Electric
Voltage	220 V / 50 Hz	220 V / 50 Hz	380 V / 50 Hz	380 V / 50 Hz
Power	1.1 KWx2	1.1 KWx2	2.2 KWx2	2.2 KWx2
Tank capacity	13 L	13 L	40 L	40 L
Flow rate	14-3.2-1.6 L/min	14-3.2-1.6 L/min	20-8.2-2.8 L/min	20-8.2-2.8 L/min
Oil cooler	Yes	Yes	Yes	Yes
Weight	59.6 Kg	63.5 Kg	63.5 Kg	68.5 Kg
Oil outputs	8x1/4" NPT	16x1/4" NPT	8x1/4" NPT	16x1/4" NPT
Dimension	500x580x531	500x620x531	650x442x680	650x442x680