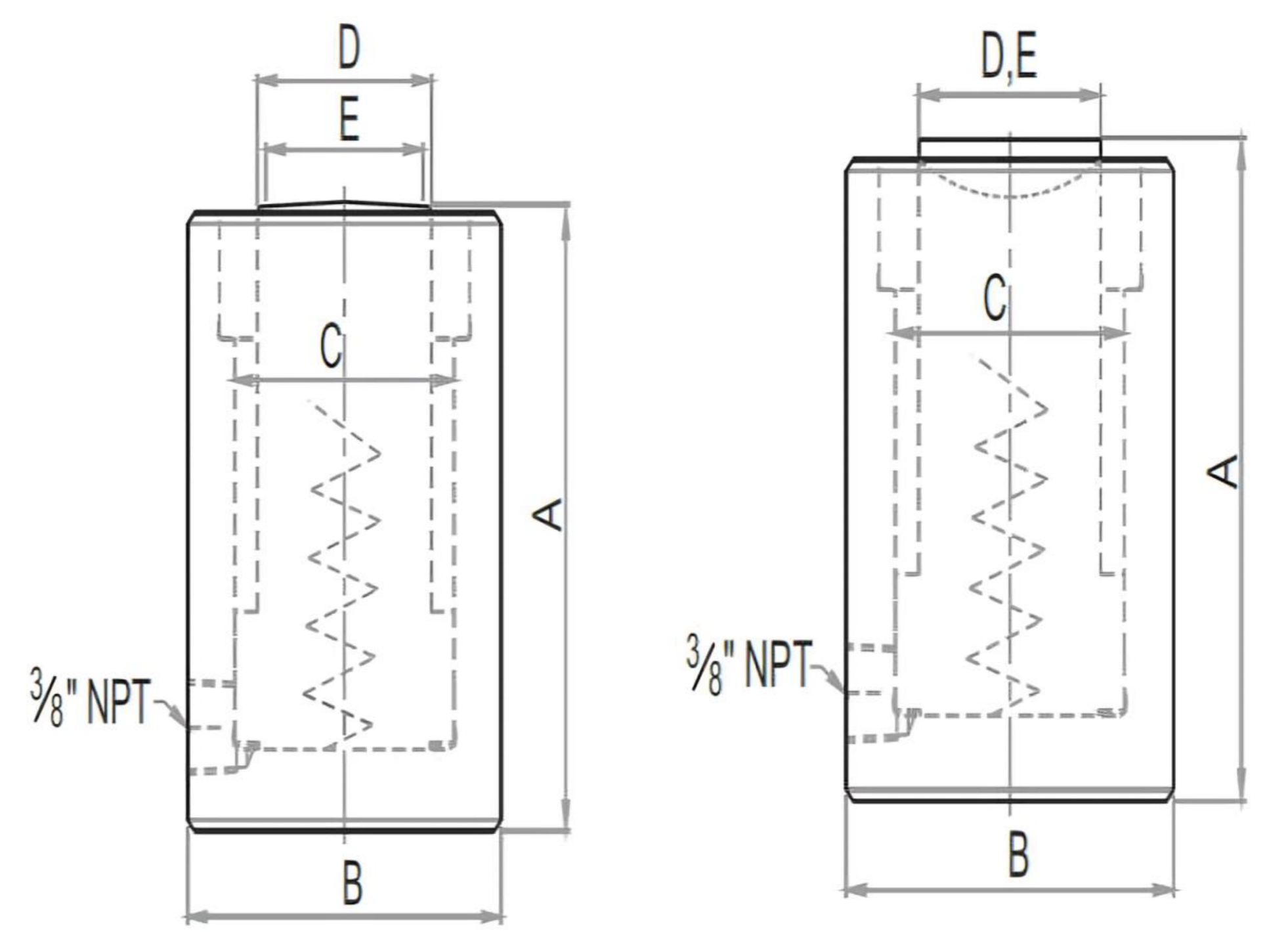


Low Height Jacks BTSL/BTSLS Series

BOLTORQ's Hydraulic Jack/Cylinder used to lift heavy loads or apply force using hydraulic pressure. It typically consists of a cylinder containing hydraulic fluid and a piston that moves within the cylinder. When pressure is applied to the fluid, it exerts force on the piston, causing it to move and lift the load or apply force to another object.



- Ideal for applications with low clearance.
- Heavy equipment lifting & alignment, Heavy equipment lifting & alignment.
- Spherical saddle reduces damage to jack against off-center load.
- Ensure no gap between jack & load to be utilize full stroke.
- *Caution* Jack being compact, provide leveled & solid support for entire base area & top.



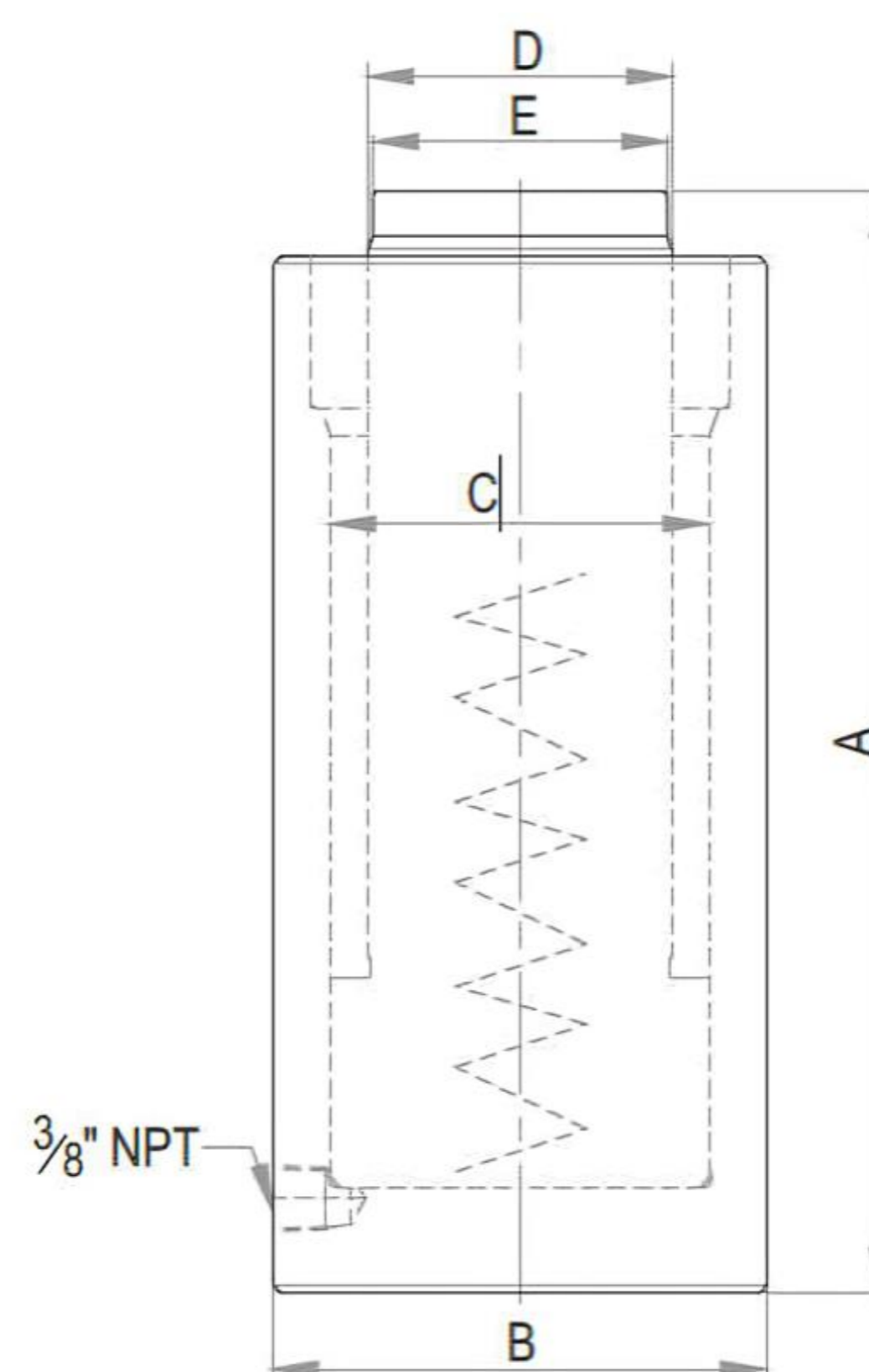
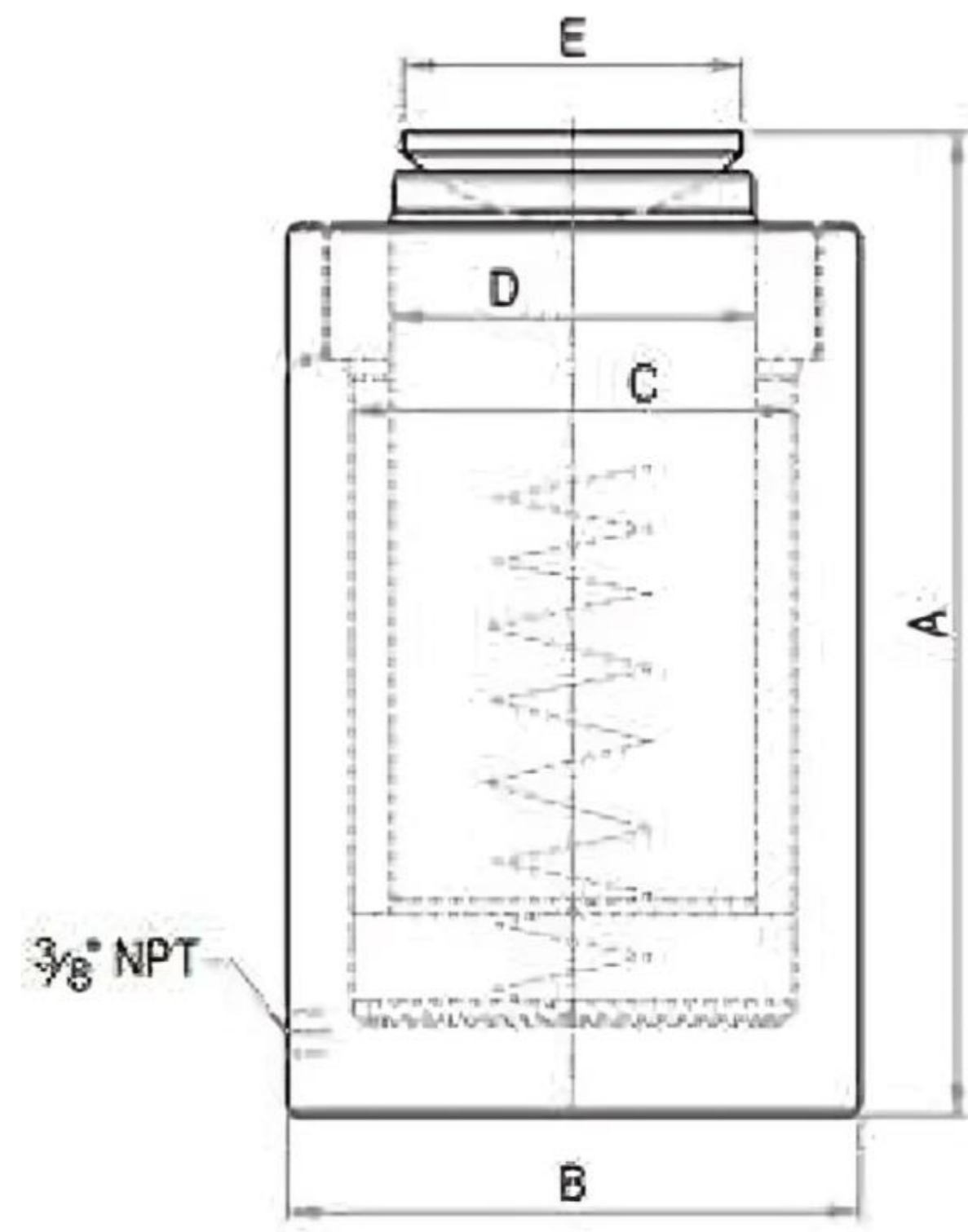
Model	Rated Capacity (ton)	Capacity @ 700 bar (kN)	Stroke (mm)	Effective area (cm ²)	Oil Cap. (cc)	A	B	C	D	E	Wt. Approx. (kg)	Model	E	Wt. Approx. (kg)
						Closed Height (mm)	Cylinder OD (mm)	Bore dia. (mm)	Ram dia. (mm)	Saddle dia. (mm)			Saddle dia. (mm)	
BTSL 13-30	10	111	30	15.9	48	90	70	45	35	-	2.3	BTSLS 13-30	-	2.3
BTSL 20-50	20	218	50	31.2	160	115	90	63	50	-	4.9	BTSLS 20-50	-	4.9
BTSL 30-50	30	309	50	44.2	221	120	100	75	60	-	6	BTSLS 30-50	-	6
BTSL 50-60	50	550	60	78.5	471	125	130	100	80	60	11	BTSLS 50-60	60	11
BTSL 75-60	75	792	60	113.1	679	145	155	120	95	70	18.4	BTSLS 75-60	70	18.4
BTSL 100-60	100	1077	60	153.9	925	150	180	140	110	80	23.6	BTSLS 100-60	80	23.6
BTSL 150-60	150	1589	60	227.0	1362	165	220	170	140	100	43	BTSLS 150-60	100	43
BTSL 200-60	200	2199	60	314.2	1885	200	255	200	160	110	66	BTSLS 200-60	110	66

Low Height Jacks BTSL/BTSLS Series

Model	Rated capacity (ton)	Capacity @700 bar (kN)	Stroke (mm)	Effective area (cm ²)	Oil cap. (cc)	A	B	C	D	E	Wt. Approx. (kg)	Model	A	Wt. (Approx.) (kg)
						Closed Height (mm)	Cylinder OD (mm)	Bore dia. (mm)	Ram dia. (mm)	Saddle dia. (mm)			Closed Height (mm)	
BTSP 5-50	5	56	50	8.0	40	135	45	32	25	25	1.5	-	-	-
BTSP 5-100	5	56	100	8.0	80	185	45	32	25	25	1.9	-	-	-
BTSP 5-150	5	56	150	8.0	121	235	45	32	25	25	2.4	-	-	-
BTSP 10-50	10	111	50	15.9	80	135	60	45	35	35	2.5	BTSPS 10-50	135	2.5
BTSP 10-100	10	111	100	15.9	159	185	60	45	35	35	3.2	BTSPS 10-100	185	3.2
BTSP 10-150	10	111	150	15.9	239	235	60	45	35	35	4	BTSPS 10-150	235	4
BTSP 10-200	10	111	200	15.9	318	285	60	45	35	35	4.8	BTSPS 10-200	285	4.8
BTSP 15-50	15	167	50	23.8	119	140	70	55	45	43	4.1	BTSPS 15-50	140	4.1
BTSP 15-100	15	167	100	23.8	238	190	70	55	45	43	5.2	BTSPS 15-100	190	5.2
BTSP 15-150	15	167	150	23.8	356	240	70	55	45	43	6.3	BTSPS 15-150	240	6.3
BTSP 15-200	15	167	200	23.8	475	290	70	55	45	43	7.4	BTSPS 15-200	290	7.4
BTSP 20-50	20	218	50	31.2	156	145	80	63	50	48	5.3	BTSPS 20-50	145	5.3
BTSP 20-100	20	218	100	31.2	312	195	80	63	50	48	6.7	BTSPS 20-100	195	6.7
BTSP 20-150	20	218	150	31.2	468	245	80	63	50	48	8.1	BTSPS 20-150	245	8.1
BTSP 20-200	20	218	200	31.2	623	295	80	63	50	48	9.5	BTSPS 20-200	295	9.5
BTSP 25-50	25	270	50	38.5	192	155	90	70	55	53	7.2	BTSPS 25-50	155	7.2
BTSP 25-100	25	270	100	38.5	385	205	90	70	55	53	9	BTSPS 25-100	205	9
BTSP 25-150	25	270	150	38.5	577	255	90	70	55	53	10.8	BTSPS 25-150	255	10.8
BTSP 25-200	25	270	200	38.5	770	305	90	70	55	53	12.6	BTSPS 25-200	305	12.6
BTSP 30-50	30	309	50	44.2	221	160	100	75	60	58	9	BTSPS 30-50	160	9
BTSP 30-100	30	309	100	44.2	442	210	100	75	60	58	11.3	BTSPS 30-100	210	11.3
BTSP 30-150	30	309	150	44.2	663	260	100	75	60	58	13.6	BTSPS 30-150	260	13.6
BTSP 30-200	30	309	200	44.2	884	310	100	75	60	58	15.8	BTSPS 30-200	310	15.8
BTSP 50-50	50	550	50	78.5	393	175	130	100	80	78	16.5	BTSPS 50-50	175	16.5
BTSP 50-100	50	550	100	78.5	785	225	130	100	80	78	20.5	BTSPS 50-100	225	20.5
BTSP 50-150	50	550	150	78.5	1178	275	130	100	80	78	24.5	BTSPS 50-150	275	24.5
BTSP 50-200	50	550	200	78.5	1571	325	130	100	80	78	28.5	BTSPS 50-200	325	28.5
BTSP 75-50	75	792	50	113.1	565	180	155	120	95	93	24	BTSPS 75-50	180	24
BTSP 75-100	75	792	100	113.1	1131	230	155	120	95	93	29.5	BTSPS 75-100	230	29.5
BTSP 75-150	75	792	150	113.1	1696	280	155	120	95	93	35	BTSPS 75-150	280	35
BTSP 75-200	75	792	200	113.1	2262	330	155	120	95	93	41	BTSPS 75-200	330	41
BTSP 100-50	100	1077	50	153.9	770	185	180	140	110	108	33	BTSPS 100-50	185	33
BTSP 100-100	100	1077	100	153.9	1539	235	180	140	110	108	40.5	BTSPS 100-100	235	40.5
BTSP 100-150	100	1077	150	153.9	2309	285	180	140	110	108	48	BTSPS 100-150	285	48
BTSP 100-200	100	1077	200	153.9	3079	335	180	140	110	108	55.5	BTSPS 100-200	335	55.5
BTSP 150-50	150	1589	50	227.0	1135	200	220	170	140	138	54	BTSPS 150-50	200	54
BTSP 150-100	150	1589	100	227.0	2270	250	220	170	140	138	65.5	BTSPS 150-100	250	65.5
BTSP 150-150	150	1589	150	227.0	3405	300	220	170	140	138	77	BTSPS 150-150	300	77
BTSP 200-50	200	2199	50	314.2	1571	215	255	200	160	158	76	BTSPS 200-50	215	76
BTSP 200-100	200	2199	100	314.2	3142	265	255	200	160	158	91	BTSPS 200-100	265	91
BTSP 200-150	200	2199	150	314.2	4712	315	255	200	160	158	106.5	BTSPS 200-150	315	106.5
BTSP 250-100	250	2661	100	380.1	3801	270	280	220	180	177	114	BTSPS 250-100	270	114
BTSP 250-150	250	2661	150	380.1	5702	320	280	220	180	177	133	BTSPS 250-150	320	133
BTSP 250-200	250	2661	200	380.1	7603	370	280	220	180	177	152	BTSPS 250-200	370	152
BTSP 300-100	300	3167	100	452.4	4524	285	310	240	200	196	149	BTSPS 300-100	285	149
BTSP 300-150	300	3167	150	452.4	6786	335	310	240	200	196	173	BTSPS 300-150	335	173
BTSP 300-200	300	3167	200	452.4	9048	385	310	240	200	196	197	BTSPS 300-200	385	197
BTSP 400-100	400	4008	100	572.6	5726	315	350	270	220	216	209	BTSPS 400-100	315	209
BTSP 400-150	400	4008	150	572.6	8588	365	350	270	220	216	239	BTSPS 400-150	365	239
BTSP 400-200	400	4008	200	572.6	11451	415	350	270	220	216	269	BTSPS 400-200	415	269
-	500	4948	100	706.9	7069	-	400	300	250	230	-	BTSPS 500-100	365	295
-	500	4948	150	706.9	10603	-	400	300	250	230	-	BTSPS 500-150	415	335.5
-	500	4948	200	706.9	14137	-	400	300	250	230	-	BTSPS 500-200	465	376

General Purpose Jacks BTSP/BTSPS Series

Hydraulic Jack Cylinders - General Purpose Jacks are versatile devices used for lifting heavy loads or applying force in industrial and automotive applications. They consist of a hydraulic cylinder and piston operated by hydraulic pressure. These jacks come in various sizes and capacities, making them essential tools for lifting and force application in construction, automotive repair, manufacturing, and other industries.



- Multipurpose jacks.
- Gland Nut designed to withstand dead end load.
- Base mounting holes & collar threads are optional.
- Used in horizontal & vertical directions.
- Maintenance, fabrication, construction, Heavy industries, power & process plants, shipyards.
- Special Feature : Spring assisted ram retraction up to 500t

Multi-Purpose Jacks BTDP/BTDPS Series

Hydraulic Jack Cylinders - Multi-Purpose Jacks are versatile tools used for lifting heavy loads or applying force in diverse industrial and automotive applications. They feature hydraulic cylinders and pistons powered by hydraulic pressure to lift or exert force on objects. These jacks come in various sizes and capacities, serving multiple purposes across construction, automotive repair, manufacturing, and other industries. Their flexibility and reliability make them essential for a wide range of lifting and force-application tasks.

- Suits general lifting & push-pull applications.
- Safety Pressure Relief valve in return port prevents damage, in case of accidental over-pressurization due to blockage in return line.
- Spherical saddle reduces damage to jack against off-center load.
- Base mounting holes & collar threads are optional.
- Pile load testing, box pushing, ship lifting & hydraulic presses.



Model	Rated Capacity (ton)	Capacity @ bar (kN)	Stroke (mm)	Effective area (cm ²)	Oil Cap. (cc)	A	B	C	D	E	Wt. (Approx.) (kg)	Model	A	E	Wt. (Approx.) (kg)
						Closed Height (mm)	Cylinder OD (mm)	Bore dia. (mm)	Ram dia. (mm)	Saddle dia. (mm)			Closed Height (mm)	Saddle dia. (mm)	
BTDP 10-150	10	111	150	15.9	239	275	75	45	30	28	8	BTDPS 10-150	285	35	8.3
BTDP 15-150	15	167	150	23.8	356	280	85	55	40	38	11	BTDPS 15-150	290	35	11.3
BTDP 20-150	20	218	150	31.2	468	285	95	63	50	48	14	BTDPS 20-150	300	48	14.6
BTDP 25-150	25	270	150	38.5	577	295	95	70	55	53	14.3	BTDPS 25-150	310	48	14.8
BTDP 30-150	30	309	150	44.2	663	305	100	75	55	53	15.6	BTDPS 30-150	320	55	16.5
BTDP 50-150	50	550	150	78.5	1178	305	130	100	70	67	26.3	BTDPS 50-150	320	74	27
BTDP 75-150	75	792	150	113.1	1696	305	155	120	90	87	38.5	BTDPS 75-150	330	88	40
BTDP 100-150	100	1077	150	153.9	2309	310	180	140	110	106	53.5	BTDPS 100-150	330	100	54.5
BTDP 200-150	150	1589	150	227	3405	320	220	170	140	137	84	BTDPS 150-150	345	130	87
BTDP 250-150	200	2199	150	314.2	4712	345	255	200	150	146	116	BTDPS 200-150	370	150	119.5
BTDP 300-150	250	2661	150	380.1	5702	350	280	220	180	177	148	BTDPS 250-150	385	165	153
BTDP 400-150	300	3167	150	452.4	6786	365	310	240	180	177	181	BTDPS 300-150	400	180	189
-	400	4008	150	572.6	8588	385	350	270	220	216	255	BTDPS 400-150	425	212	265
-	500	4948	150	706.9	10603	-	400	300	240	-	-	BTDPS 500-150	450	230	367
-	600	5987	150	855.3	12829	-	430	330	270	-	-	BTDPS 600-150	480	260	453
-	800	7939	150	1134.1	17012	-	505	380	300	-	-	BTDPS 800-150	515	290	655
-	1000	9930	150	1418.6	21279	-	560	425	350	-	-	BTDPS 1000-150	560	330	896
-	1500	15154	150	2164.8	32472	-	705	525	420	-	-	BTDPS 1500-150	620	400	1543
-	2000	20458	150	2922.5	43837	-	810	610	525	-	-	BTDPS 2000-150	705	495	2366